

Multifunctional Water Ionizer Operation Instruction



- Please read this manual before using this product
- Please use this product properly
- Please keep this instruction manual properly

Precaution For Installation And Use

Input Water Quality Requirements

- The input water quality should meet the local drinking water quality standard. If the water quality is not good, it may not only shorten the water ionizer's lifespan, but even may be harmful to your health.
- The input water flow rate should be over 1.0L/min, then it will drive the water flow sensor to start the water ionizer. If your water flow is less than 1.0L/min, the water ionizer can be turned on to work. Then you may need a pump to help.
- Usually it is not suggested to use the Reverse Osmosis (RO) system as the pre-filters. Because the RO membrane can remove all the ions and reduce the water conductivity, While the water ionizer needs the water conductivity to complete the electrolysis process. If you do need to use the RO system, then you must install a mineralizing water filter after it, to increase the water conductivity.

Do Not Damage The Power Cable And Plug

- Do not force to bend, twist or squeeze the power cable and plug
- Do not drag the power cable
- Do not put heavy weight on it
- To avoid electric shock or catching a fire, stop using the machine once a damage is found on the power cable or plug. Please contact professionals to repair the damaged power cable and plug.
- Always insert the plug to the end. Stop using a damaged or loosened power plug. If not, it may cause the electric shock or catch a fire.
- Clean the dusts on the power plug pins regularly. Because if the dusts meet the water mist, there is a risk of electric shock or catching a fire. Do not use volatile solvents to clean the machine. Clean it with cotton cloth and detergent.

Do Not Install The Water Ionizer In The Places Below

- Near the Fire or high temperature(Over 60°C) place
- Outdoors or exposing to the sun or rain
- In steam or Moisture place
- Do Not disassemble, repair or modify the machine on your own. Please contact the distributor/seller or professionals for any question.

How To Install

1. Check The Accessories

Before installing the machine, please check if all the accessories are received. If any of them missing, please contact the distributor/seller.



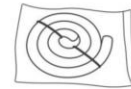
Stainless steel Spout



Faucet adapter



Rubber Joint



Soft water hose



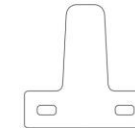
Hard water hose



Hose clip



Power cord



Stainless steel holder



Manual

Note: If there is any improvement, it will be clarified in this manual. The product's appearance, color changes and specifications are subject to modify without notice.

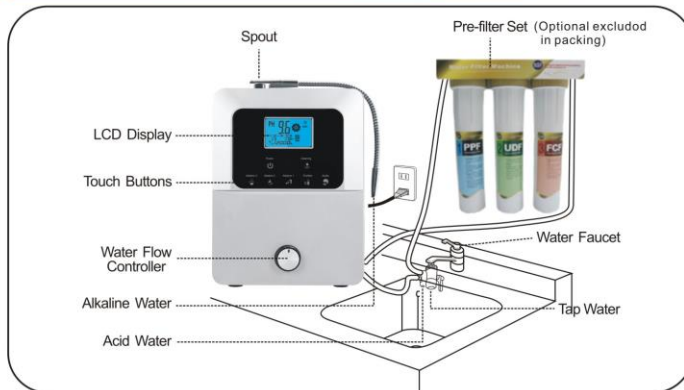
2. Installation Environment

- A. Install the machine in a place where avoid the direct sunshine and the fire (Over 1 Meter).
- B. This water ionizer is using 110V/220V power supply. Please connect it to a separate power socket, and away from other appliances, such as microwave oven. To ensure safety, the ground wire is needed.
- C. This water ionizer works with 0.1~0.3MPa water pressure. If your input water pressure is lower than 0.1MPa, please install a booster pump.

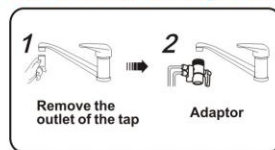
3. Installation Tools You May Need

- A. Cross Screwdriver
- B. Cutter Knife
- C. PTFE tape

Installation Diagram Overview

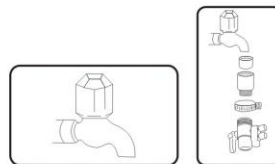


How To Connect The Adapter To The Faucet:



Type A:

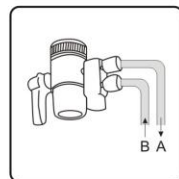
This type of faucet is with the external threads, after removing the outlet nozzle of the tap. Connect the adapter to the tap and fasten the screw. Ensure the washer has been inserted before tightening.



Type B:

Connect the black rubber part to the faucet. Remove the inside small rubber ring if necessary. Fasten the steel ring with a screwdriver. Then fix the adapter to the screw threads at the bottom of the black rubber part.

How To Connect The Hoses To The Adapter:

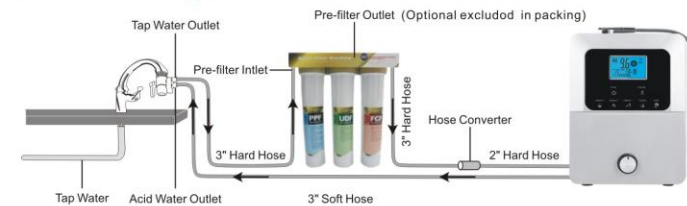


Insert the hoses through the hollow bolts first. Fix the hoses on the nozzles, then fasten the hollow bolts.

Top hose (A): Tap water outlet.
Connect the other end to the Pre-filter Inlet. The tap water will flow into the Pre-filter set.

Bottom hose (B): Drain water outlet.
Connect the other end to the Outlet in the back of the unit. The drain water will flow out from the Outlet.

Hoses Installation Diagram:



A 3" soft hose and a 2" hard hose will come with the machine. The 3" soft hose connects the Acid Water Outlet nozzle of the adapter to the water Outlet in the back of the unit. The 2" Hard Hose connects the Hose Converter and the water Inlet in the back of the unit.

And a 3" hard hose will come with the pre-filter set. Cut this Hose into 2 pieces. As shown in the above diagram, one piece connects the Tap Water Outlet nozzle of the adapter and the Pre-filter Inlet. Another piece connects the Pre-filter Outlet and the Hose Converter and 2" Hard Hose.

*** Tips: Remove the blue clips on the Hose Converter and plug the hoses inside and push tight. Then put the blue clips back to fasten.

*** If you don't use the pre-filter set, then you need to cut the soft hose into 2 pieces according to your kitchen need. One piece connects the Acid Water Outlet nozzle of the adapter to the water Outlet in the back of the unit. Another piece connects the Tap Water Outlet nozzle of the adapter and the Hose Converter and 2" Hard hose, then to the water Inlet in the back of the unit.

Product Main Features

This Multifunctional Water Ionizer can be used freely in different water quality and different standards of the power supplies.

1. Include a super large 3.8-inch colorful LCD screen display, displaying more information.
2. The LCD displays pH and ORP, flow rate, temperature, filters' usage life etc., helping user to select suitable water.
3. Elegant and solid CDC touch control panel, working with the English voice prompt function, easier to be used by children & elder people.
4. By using high-power SMPS power supply, it is suitable for many different power supplies in the world, safe and reliable.
5. The electrolysis with the Microcomputer automatic control system can work perfectly with the water TDS from 50 to 1000PPM.
6. It has a Built-in water filtering system, showing the filter life span in time, to make sure the water quality is safe to use.

7. It has the self-cleaning function, to prevent scaling.
8. Japan imported stainless steel spouts, never rust, free to be bent to any direction.
9. 11 pcs large size Titanium with Platinum coating plates, applied with Japan imported ionic membrane, providing higher efficiency electrolysis and longer working life.
10. Built-in overheat protection system, prevent high temperature water entering the machine, assure the machine to work safe.
11. It comes with 5 different water levels: Alkaline 1, Alkaline 2, Alkaline 3, Purified water, Acidic . It not only has the alkaline and acidic water for daily use, but also produces the hydrogen water which is much beneficial for human body.

Technical Parameters And Specifications

1	Power supply	(SMPS)AC 110~220V,50~60Hz
2	Working power	210W MAX
3	Bide power	1.5W
4	Water pressure	0.1~0.4MPa
5	Inlet water TDS	50~1200mg/L
6	Flow rate	0.8~3.5L/Min
7	Best flow rate	2L/Min
8	Electrolysis Method	Continuous electrolysis
9	Continuous electrolysis time	≤30 minutes
10	Internal filter material	High performance fiber carbon filter
11	Filters usage life	3000~12000L (Set up according to different water quality)
12	Display type	3.8-inch colorful LCD screen
13	Display content	Alkaline/acid/purified water levels, filter life span, flow rate, time, water production dynamics, pH, ORP, temperature etc.
14	Plates material	Titanium with platinum coating
15	Plates size	79mm*43mm
16	Number of plates	11 PCS
17	pH range	2.8-11(MAX)
18	ORP range	+500~-800mV(MAX)
19	Inlet water temperature	Lower than 45 Celsius degree
20	Safe protection	Overcurrent protection

Note : The pH & ORP range, Filter usage life and Flow rate etc is depending on your local water quality and supply condition.

Controlling Panel Overview



Alkaline water button 3

Produce alkaline water with higher pH for cooking.



Alkaline water button 2

Produce alkaline water with higher pH for preparing tea and coffee.



Alkaline water button 1

Produce mild alkaline water for daily drinking.



Purified water button

Use purified water to take medicines or prepare formula for baby.



Acid water button

Acidic water is generally for sanitizing, like washing vegetables, dishes, face and body etc.



Cleaning button

As soon as output water quantity reaches the set-up automatically cleaning quantity, the indicating light is on. When the machine is working, press this Cleaning button to start cleaning the system.

When total water output reaches the set-up filter life span, the indicating light is on for changing the filter. After filter is changed, press Cleaning button for 4 seconds to reset the filter life span display.

LCD Display Introduction



Alkalinity: display Purple color for alkaline water level 3 , Blue color for Alkaline water level 2, Light blue color for alkaline water level 1

Purified water: display Green color

Acidity water: display Red color

Flow: display current water flow rate

Temp: display current water temperature

PH: display the pH (potential of Hydrogen) value of the stainless steel spout output water

ORP: display the ORP (oxidation reduction potential) value of the stainless steel spout output water

Cleaning: the machine is cleaning

Electrolysis: the machine is electrolyzing

Filter: display the internal filter life span

Impeller: the machine is working with the water passing through.

How to operate:

When the water flow regulator is turned up, water enters the ionizer. The screen will be light up as soon as the water flow rate is over 0.8L/min, then the unit will start working.

The screen will be light up, and the default pH level is on Alkaline Water Level 2, and at the same time, the music and a voice of “Alkaline Water Level 2” will be heard.

Press the 3 Alkaline Water Buttons to select different levels of 1, 2, and 3 for different pH values for different usages. The screen light turns to different colors to indicate different alkaline water levels. You will hear “Alkaline Water Level 1”, “Alkaline Water Level 2” and “Strong Alkaline Water” for the different Alkaline Water Levels. The alkaline water will come out from the top stainless steel spout, and the acidic water will come out from the bottom drain hose.

Press the Purified Water Button, a voice of “Filtered water” will be heard, meanwhile the ionizer will produce purified water which is not ionized (screen light turns green). The light turns off 1 minute after water supply is turned off. The ionizer automatically switches to Alkaline Water Level 2.

When the Acidic Water Button is pressed, a different music and a voice of “Super Acidic

Water” will be heard (screen light turns red). The acidic water will come out from the top stainless steel spout, and the alkaline water will come out from the bottom drain hose. Light turns off 1 minute later after water supply is turned off. The ionizer automatically switches to Alkaline Water Level 2.

When the Cleaning Button is pressed, the voice of “Unit Is Now Cleaning” and music will be heard. The screen light turns red. After the cleaning (about 1 minute), the ionizer will automatically switch to Alkaline Water Level 2.

Note: The ionizer will start auto-cleaning when the flow rate is lower than 0.8L/M (LCD turns red). After 5 seconds the auto-cleaning will stop, and the LCD turns blue. If there is no operation for 15 seconds, the LCD turns out and the ionizer will enter standby mode.

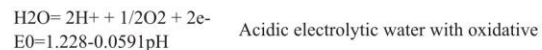
General Use & Instruction For Different PH Water

	Function	Uses Of Different pH Water	Same pH Foods Reference
Alkaline Water	Food Disinfection & Cooking	<p>pH 9.0-11 Alkaline Water Level 3</p> <ul style="list-style-type: none"> • Soaking vegetables, beef, pork and fresh fish to remove fishy taste and keep the food's nature flavors. • Good for making soups and helpful for maintaining their nutrients and colors. • Good for cooking rice and noodles,preserves its nature flavor longer. • Effective reduce pesticides on fruits and vegetables. • Good for cleaning tough stain on dishes. • Strong antioxidant for removing the free radicals from body. 	Ginger Grapes Kelps Seaweeds
	Drinking tea & coffee	<p>pH 8.5-9. 5 Alkaline Water Level 2</p> <ul style="list-style-type: none"> • After initial period use, this level is suitable for daily drinking. • Good for making tea or coffee, reduce bitterness and give better taste. 	Mushrooms Soy beans Spinach
	Daily drinking	<p>pH 7.5-9. 0 Alkaline Water Level 1</p> <ul style="list-style-type: none"> • Suitable for daily drinking and improving your overall health. • Improve conditions for upset stomach, constipation, diarrhea and gout. 	Banana Carrot Chestnut lettuce Red beans
Purified Water	Purified water	<p>pH 7.0 Purified Water</p> <ul style="list-style-type: none"> • No color, no taste, no impurity • Suitable for taking medicine, making milk and for baby's diet. 	Asparagus Bread Milk Miso Tofu

Acidic Water	Facial & skin cleaning Sterilization & disinfection	<p>pH 3.5-5.5 Acidic Water Level(Sanitizing)</p> <ul style="list-style-type: none"> • Not suitable for drinking • Close to the skin pH value, it has an astringent effect when face cleaning. • Ideal for bathing sensitive skin and infants, sunburn relief • Minimize the appearance of pores, and good for brushing teeth. • Anti-bacterial for tableware and floor cleaning. • Eliminates the residual agricultural chemicals on fruits and vegetables when soaking them in acidic water. 	<ul style="list-style-type: none"> Beef Beer Clam Rice Octopus Cheese Egg yolk oats squid
--------------	---	--	--

Principle Of Operation

The basic principle of the water ionizer is electrolysis of water to change the PH and Oxidation-Reduction Potential (ORP) to separate the hydrogen and the hydroxide ion. In general, the water cannot decompose into O₂ and H₂ in the state of nature, but according to Faraday law of electrolysis, if add cathode and anode into water. When the current is switched on, the water will be electrolyzed. The Anode materials are usually platinum or platinum. They are not easy to dissolve. The oxidation-reduction reaction of cathode and anode is as follows



After the hydrogen and oxygen are produced on the surface of the cathode and anode, the water around the electrodes become alkaline and acidic. At the same time, the ORP are changed. The porous semipermeable membrane or the semipermeable membrane that Cation-anion can selective to go through will be insert into the two poles to limit the water. The acidic water with high concentration and oxidative will be collect from positive pole, the alkaline water with high concentration and reductive will be collect from negative pole. This is the operation principle of water ionizer.

Function Setting

*Do not turn on the water tap when you are going to set the machine.

Purified Water Button Settings: Filter Life, Cleaning Setting, Voice Setting

How to set up the filter life:

Press Purified Water Button about 4 seconds to enter the filter life setting. The filter life

begins to count down when the machine starts. Life setting range is 1000L to 12000L---- each level is 1000L. Use Alkaline 1 Button (+) and Acidic Button (-) to do cycle adjustment.

Instructions of filter life setting:

1. Under the filter life setting state, if you don't press Alkaline 1 Button (+) and Acidic Button (-) to adjust, the old memory of filter life will not be covered. If you press Alkaline 1 Button (+) and Acidic Button (-) to adjust, the current filter life settings will directly return to zero.

2. When the filter life is expired, press the Cleaning Button for 4 seconds to set value returns to zero, under the standby state.

Cleaning Setting Description:

Press the Purified Water Button the second time to enter the cleaning setting. Press Alkaline 1 Button (+) and Acidic Button (-) to do cycle adjustment among the four numerical of "30, 60, 90, EL".

When set to 30, it means when the total discharge capacity reaches 30L, the cleaning light tips. Press Cleaning Button when water is running through the machine, the former counted water capacity will return to zero. Then cleaning program will run, with cleaning music starting, cleaning light tipping, and the LCD turning red. After 1 minute, the cleaning will stop and return to the default Cooking Level. If set to "EL", when the total water discharge capacity reaches 60L, cleaning light tips, and automatic cleaning action will go ahead next time as the water running though.

Voice Setting Description:

Third pressing Purified Water Button to enter the voice language settings, setting items are "A1(Chinese), A2(English)". Press Drinking Button (+) and Sanitizing Button (-) to adjust.

A1: Voice broadcasting in Chinese. A2: Voice broadcasting in English.

Fourth pressing Purified Water Button to enter the voice and background music settings, setting items are "C1, C2, C3". Press Drinking Button (+) and Sanitizing Button (-) to adjust.

C1: Play voice and background music. C2: only play voice, no background music. C3: Turn off voice and background music.

Fifth pressing Purified Water Button to save the settings, and the ionizer will return to standby on the Cooking Level.

Precautions For Use

Before using this water ionizer, please read these precautions carefully. Please operate this water ionizer following the precautions to avoid the damages to the machine or your health.

- City or municipal water is recommended. Well water or ground water which contains impurities, chemicals and heavy metals is not recommended.
- Please replace the water filters timely, to assure the water quality is good for your health and machine's lifespan.
- Don't connect it with a water heater. Make sure the inlet water temperature is below 113 Fahrenheit degrees (45 Celsius degrees). Keep the machine away from high temperatures and direct sunlight.
- Don't use water to rinse the machine directly, and don't use alcohol and other volatile solvents to wipe it, either. Please use a soft cloth with soapy water to wipe it gently.
- Don't use the aluminum or copper container for the alkaline or acidity water, as the water could be contaminated by these types of containers.
- Don't disassemble the machine & components. Don't block, fold or break the outlet tube. When the machine is working, for the purpose of expelling water freely, don't keep the Drain water outlet tube in a high place. And the Drain water tube should be no more than 60cm in length.
- Every morning before collecting alkaline water from the ionizer, allow the water to run for 10-30 seconds to flush out the water in the machine and filters. And the end of the day, it is suggested to flush for 10-15 seconds in the "Purified water" level and "Sanitizing Water" level to prevent scaling.
- The ionized alkaline & acidic water should be used as soon as possible within 24 hours.
- Don't take medicine with alkaline water. Please use purified water.
- Don't drink acidic water.
- Please disconnect the power plug when not using the machine for long period.

Troubleshooting

Issue 1: The power supply light is not on or LCD screen does not display.

Solution: please check electricity power supply is connected properly and re-plug in the cord.

Issue 2: The machine keeps beeping (alarming).

(Note the symbols on the LCD display while the machine beeping)

Solution: there will be a "H1" displayed on the LCD, which means the tap water's temperature is too high, please turn off the tap water and do not let HOT water enter the machine.

Issue 3: Touch control panel does not function or respond (but the machine can still work normally).

Solution: Please unplug the power cord and wait a minute, then plug in the power cord. After the power is re-applied, the unit should return to normal operation. Note: Do not share the power supply with a large power appliance. Do not locate the ionizer near electromagnetic radiation appliances, i.e. microwave ovens.

Issue 4: Background light on LCD is not on and the LCD is dark, when water passes

through.

Solution: The tap water pressure is LOW (Less than 250ml water output in 15 seconds), please increase the water pressure and check if the filter blocked or not. Replace filters as needed.

Issue 5: Acidic / alkaline water or purified water does come out.

Solution: Please replace the water filters if needed. If water pressure is too LOW, please increase water pressure. If "cleaning indicator" light is "ON", please initiate cleaning cycle.

Issue 6: There is some white sediment in the alkaline water.

Solution: The produced alkaline water is usually whitish color, because it contains the air bubbles during the production. It will return to clear very soon. This is normal, and the water is OK to drink.

Issue 7: A white film appears on the inner wall of the alkaline water container.

Solution: This is a crystallization of calcium carbonate by gas in the air after the reaction of (solid components of calcium). These white substances are normal when generating alkaline water. It does not imply there is anything wrong with the water. The water is OK to drink.

Note: If this condition persists, please use food grade citric acid or white vinegar to clean the electrode plates. Allow the machine to soak for a few hours and flush thoroughly. Please see maintenance procedures.

Note: If the machine will not be used for a long period of time, please unplug the power cord, remove the filter and remove the shunt Watergate and water purifier. Drain thoroughly and place the filter cartridge in a sealed plastic bag/film and store in the refrigerator.

Issue 8: Alkaline water output amount reduces gradually.

Possible causes and solutions:

Inlet Water Pressure- make sure input water pressure is sufficient –above 40 psi.

Filter blockage – please make sure filter life is OK and replace filters as needed.

Excessive build up of calcium deposits in the outlet tube - please clean the outlet tube as needed. Soak in citric acid as needed.

Excessive build up of calcium deposits on the electrolysis plates – please contact customer service for support.

Warranty Registration Card

Customer Name	
----------------------	--

Customer Phone Number

Customer Address	
-------------------------	--

Product Series Number

Date of Purchase	
-------------------------	--

Warranty Period

Distributor Name	
-------------------------	--

Distributor Phone Number

Distributor Address	
----------------------------	--

Maintenance Record